

We can help
Call us now
1800 652 705

RELIABILITY ASSURED!

WITH YOUR OWN
EAST COAST
ANTENNA SYSTEM
TELEVISION PICTURES MADE SIMPLE


Product Number: C&P
Web Code: A100-1001

All Needed Antenna System Components Included :

- ◆ VHF/UHF Antenna with easy polarity change
- ◆ 1M Fly Lead
- ◆ Thru-The-Wall Connection System
- ◆ 7" Connectors direct to circuit board
- ◆ 7M of Low-Loss Co-Axial Cable and Ready to Use
- ◆ Weather Boots
- ◆ Technical Support

WILKGARD TECHNOLOGY GROUP
PTY LTD
SPECIALISTS IN R.F. TECHNOLOGY
ABN: 77 153 218 949

For details visit www.explorer-rv.com.au
Telephone: (03) 9975 7555
Facsimile: (03) 9808 0740
Email: dissem@wilkgard.com.au
Address: 13/12 Edina Road,
Ferntree Gully, Vic 3156



We can help
Call us now
1800 652 705

GO ANYWHERE!

WITH YOUR
NOMAD
ANTENNA SYSTEM
TELEVISION PICTURES MADE SIMPLE

Product Number: C&A
Web Code: A109-1002

All Needed Antenna System Components Included :

- ◆ VHF/UHF Antenna
- ◆ 1M Short Lead
- ◆ Full Instructions
- ◆ Thru-The-Wall Connection System
- ◆ 7M of Low-Loss Cable and Ready to Use (Including Weather Boots)
- ◆ 12 volt Plug Pack
- ◆ DC 12 volt Lead
- ◆ Technical Support
- ◆ Amplifier

WILKGARD TECHNOLOGY GROUP
PTY LTD
SPECIALISTS IN R.F. TECHNOLOGY
ABN: 77 153 218 949

For details visit www.explorer-rv.com.au
Telephone: (03) 9975 7555
Facsimile: (03) 9808 0740
Email: dissem@wilkgard.com.au
Address: 13/12 Edina Road,
Ferntree Gully, Vic 3156



► To enquire telephone : (03) 9975 7555
► or email dissem@wilkgard.com.au
► www.explorer-rv.com.au
► 13/12 Edina Road, FERNTREE GULLY, 3156. VIC.

SM+TM28-P

Made up of SM-P and TM28-P

Installation Instructions:

- Line up mast where you want to install it.
For camper vans, mount small mast directly onto the roof.
For pop-tops or caravans, mount to take advantage of internal wall bracing-such as at the front of the top corner of the van, where a wooden gusset is often fitted.
- Slide plastic mount along mast to wanted position.
- Mark the two outer holes.
Note: If van is fibreglass use rivets.
- Drill small pilot holes and screw in screws to secure.
- Remove mast.
- Drill and screw in remaining two stainless steel screws.
- Uninstall plastic mounts. Reinstall mounts on to mast, the top mount being inverted (refer to figure 3).
- Apply adhesive.
- Align mast and re-attach to prepared holes position. Screw and tighten outer screw positions..
- Clean up any excess adhesive.
- Remove mast and install two remaining stainless steel screws
- Reinstall mast. Tighten wing nuts to lock mast into place.

TM28-P Parts included:

2 x tee nuts + 2 x thumb screws + 1 x mast cap

SM-P Fixing Kit

2 x 5mm x 25mm stainless screws
2 x 5mm stainless wing nuts
6 x #8 x 3/4" stainless self tapers
6 x Special 3/16" diameter Pop Rivets

MOUNT Screws or Rivets



MOUNT Adhesive

Adhesive to
back of Mount
to go onto van wall.
Check adhesive
suitability for wall material



► Telephone : (03) 9975 7555
► qual@wilkgard.com.au
► www.explorer-rv.com.au
► 13/12 Edina Road, Ferntree Gully 3156. VIC.

Telescopic Mast: TM28-P

1. First take the 32mm Dia mast pole and lay it on a flat table with the three holes facing up. Fig 1.



Fig. 1

2. Using a flat thin object such as a butter knife or a finger nail emery board, etc, as an installation tool, place one of the T-nuts onto the end of the tool, refer to photograph. Fig 2

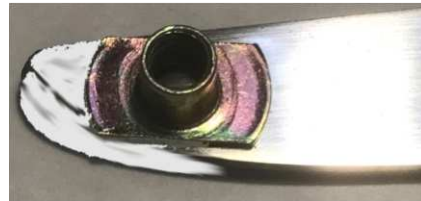


Fig 2

3. Carefully insert the T – Nut into the tube until it lines up with the second rear most hole and raise the t-nut into the hole. Fig 3



Fig 3

4. Hold the T-Nut in place and screw the Thumb screw in a few threads, which will prevent the T-Nut from falling out. Repeat for the top hole. Fig 4

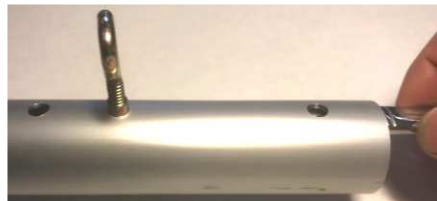


Fig 4

5. If installing the mast cap on the 25 mm tube, do so now.
6. Then pick up the 32mm mast tube and rotate it so that the T-Nuts and Thumb screws now hang down.
7. Place the bottom of the mast on the ground away from you so that the mast is sloped on an angle.
8. Look down the end of the tube and rotate the two thumb screws so that the T-nuts look like the picture. Fig 6
9. Pull the thumb screws to fully seat the T nuts.
10. While holding the 32mm tube in this position, pickup the 25mm dia tube and insert the end into the 32mm dia tube and slide it down until it is sticking out a small length and tighten the thumb screws to hold in place.



Fig 6

Note: If assembling an explorer antenna mount as used of our Nomad, East Coast, optimiser or upgrade antennas then you will need to drill a 5 mm diameter hole in the end to match the mount. Refer to the Antenna instructions section on installing antenna to mast.

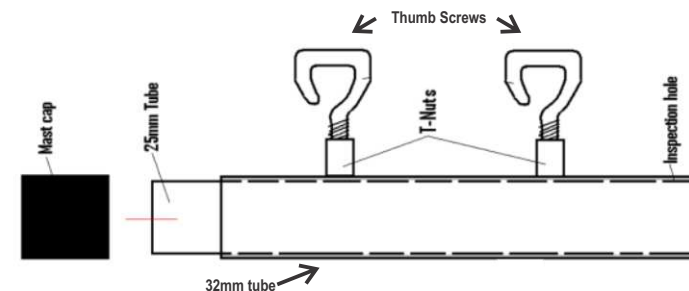


Fig 7