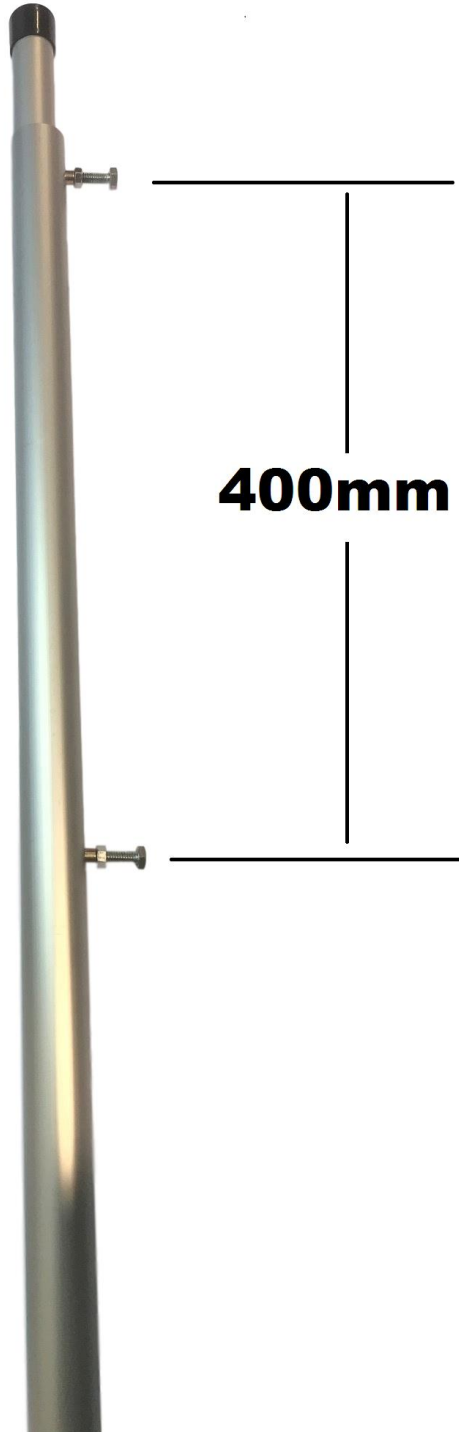


Wilkgard 2.5 Meter Mast Instructions

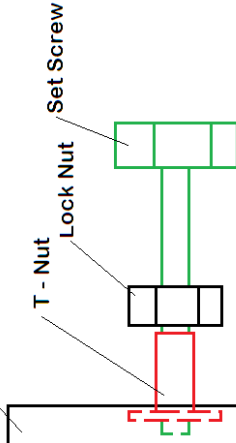
Note: See Wilkgard guying Kits for the appropriate guying for your roof as required.

**2.0 to 2.5
Meter mast**

400mm



Mast Section
Aluminium Tube



WILKGARDSM
TECHNOLOGY GROUP
PROPRIETARY LIMITED
SPECIALISTS IN RF TECHNOLOGY

3.5 meter and 2.5 meter Mast Instructions

For the 3.5meter mast first complete the assembly by inserting the 32mm mast and 25mm mast sections into the 38mm tube past the T-Nuts and Set screws.

Insert the 32mm tube into the 38mm dia tube by pulling and rotating the set screw to bring the T-Nut all the way out and allow the 32mm dia mast to slide past the T-Nuts.

Adjust mast height by loosening the lock nut and then the Set screw.

Once the mast is at the correct height secure by tightening the set crew and then lock off by tightening the Lock Nut.