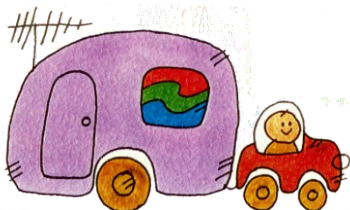




Caravan

As a fully effective roof mounted antenna has not been created yet and we have tried!. For best reception you have to put up with manual mounting and removal. To make this necessary step as painless as possible we have several kits on offer.



Home/Commercial

Whether iron roof, tiled roof, or metal type deck roof we have a kit that will suit your requirements.

If additional height is needed, we have the fittings that will make guying or support easy too!

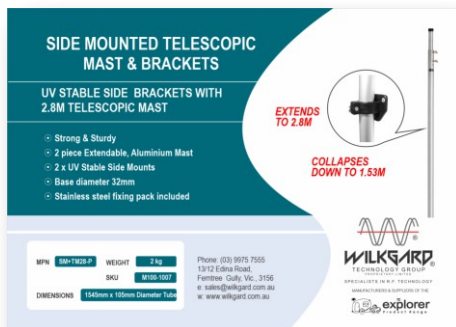


SIDE MOUNTED 2 STAGE TELESCOPIC MAST & BRACKETS

UV Stable Side Brackets With 2.8m Telescopic Mast

This 2 Stage Lightweight Antenna Mast is ideal for Caravans, Motorhomes, Campervans and RV Vehicles.

- Strong & Sturdy
- 2 piece Extendable, Anodised Aluminium Mast
- 2 x UV Stable Side Mounts



- Base diameter 32mm
- Stainless steel fixing pack included



**EXTENDS
TO 2.8M**

**COLLAPSES
DOWN
TO 1.53M**



For more information go to www.wilkgard.com.au Part #: SM+TM28 / SKU: M100-1007

QUICK RELEASE SIDE MOUNT & MAST

Clips on & off in seconds

This 2 Stage Lightweight Antenna Mast is ideal for Caravans, Motorhomes, Campervans and RV Vehicles.

- Strong & Sturdy
- Comes complete with all fittings to mount to any type of caravan/vehicle
- All brackets UV stable stainless steel bolts & wing nuts
- Ideal for any antenna



Rivets shown
in various
stages of fixing



For more information go to www.wilkgard.com.au Part #: QFPC / SKU: M100-1040

CURVED QUICK RELEASE SIDE MOUNTED MAST KIT.

Suitable for Hi-Ace, Transit, Crafter or similar curved or sloping sided van. Here's the solution.



For Hi ACE style Vans, Sprinter, Crafter. This one of a kind kit allows for the mast to be clipped on and off in seconds and yet is an extremely strong mount allowing for multiple height adjustments.

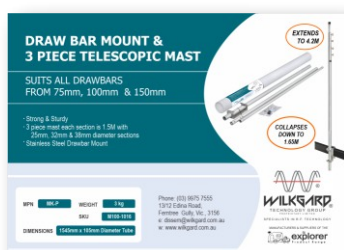
Customers back to 1970's are still using our telescopic mast. The thumb screws and Tee nuts which are the only parts that can wear or rust out are all replaceable for a nominal amount of money. Adjusting the antenna for direction and height is a simple thing with the explorer brand.

For more information go to www.wilkgard.com.au - Part #: QFPC / SKU: M100-1001

DRAW BAR MOUNT & 3 PIECE TELESCOPIC MAST

SUITS ALL DRAWBARS FROM 75mm, 100mm & 150mm

- Strong & Sturdy
- 3 piece mast each section is 1.5M with 25mm, 32mm & 38mm diameter sections
- Stainless Steel Drawbar Mount



EXTENDS TO 4.2M

COLLAPSES DOWN TO 1.65M

For more information go to www.wilkgard.com.au - Part #: MK-P/ SKU: M100-1016

IRON ROOF MOUNT

**Complete with
1.2M galvanised mast**

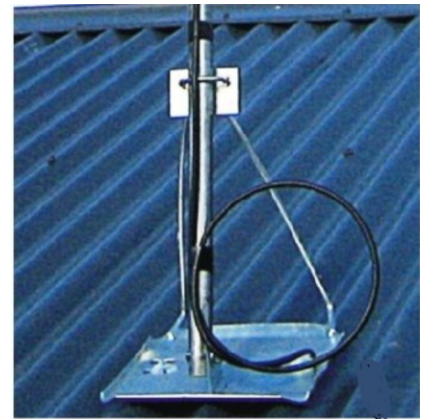
includes the following:

- 20 metres of RG6 duo co-axial cable
- 2 x twist on F connectors
- Instructions.



*Locate in best
signal spot*

**1.2m
Mast**



For more information go to www.wilkgard.com.au Part #: IRM1220M / SKU: M100-1054

TILE ROOF MOUNT

**Complete with
1.2M galvanised mast**

Comes with:

- 20M RG6 Duo Cable
- 2 x Twist on F connectors
- Instructions



*Locate in best
signal spot*

**1.2M
Mast**



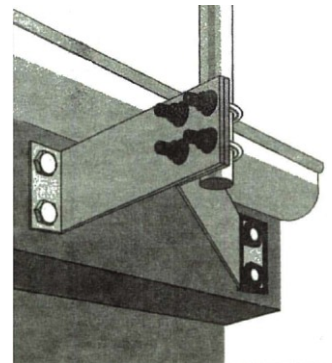
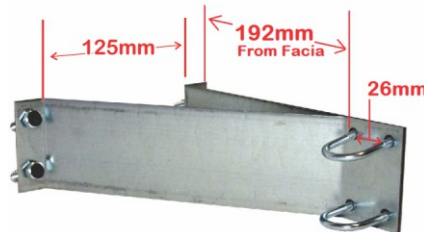
For more information go to www.wilkgard.com.au Part #: TRM1220M-P / SKU: M100-1038

FASCIA MOUNT with 1.5M x 25mm dia Aluminium Mast

EASY TO MOUNT FROM LADDER

Product Includes:

- ⦿ 25mm x 1500mm Aluminium Mast
- ⦿ Fascia Mount Bracket
- ⦿ 4 x 3/8" diameter x 11/2" coach screws
- ⦿ 4 x 1/4" nuts
- ⦿ 4 x 1/4" washers
- ⦿ 2 x 1/4" diameter U- bolts



For more information go to www.wilkgard.com.au Part #: FMB15A / SKU M100-1008

GUTTER MOUNT WITH ANODISED ALUMINIUM MAST

Easy to install tile roof mount For digital tv antenna

Bolts to Rafter under a tile roof and can be done from a ladder

Includes:

- ⦿ A lightweight gutter mount.
- ⦿ 1M x 25mm diameter anodised aluminium mast with mast cap
- ⦿ 3 x TEK screws



For more information go to www.wilkgard.com.au Part #: LGM / SKU: M100-1066

1.8M HEAVY DUTY ROOF TRIPOD MOUNT KIT

Suitable for tile or iron roof

- ⦿ Ideal for Weather Stations, Ham Radio or TV antennas.
- ⦿ Z shaped brackets eliminate drilling holes in the tiles.
- ⦿ Or use on color-bond Iron roof.
- ⦿ Galvanized 1.8M Mast included
- ⦿ Ideal for larger antennas
- ⦿ Brackets, bolts & screws included

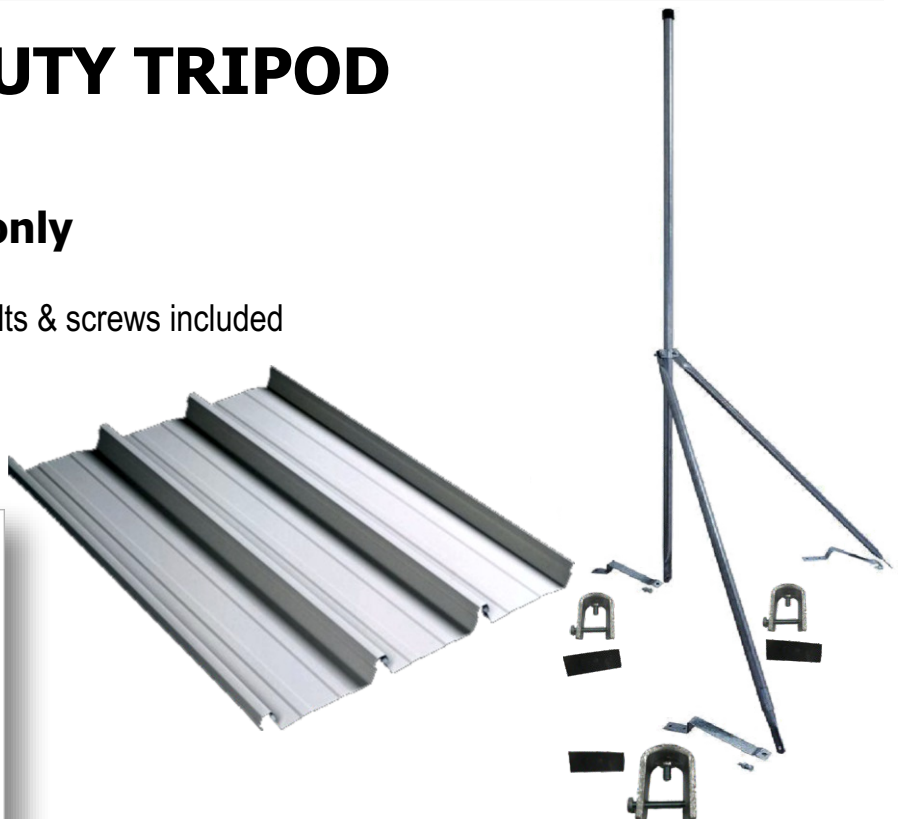


For more information go to www.wilkgard.com.au Part #: TRM118 / SKU: M100-1039

1.8M HEAVY DUTY TRIPOD DECK MOUNT

For stramit deck roof only

- ⦿ 3 Adaptor brackets, rubbers, bolts & screws included
- ⦿ Galvanized 1.8M Mast included
- ⦿ 2 adjustable support rods
- ⦿ Ideal for larger antennas



For more information go to www.wilkgard.com.au Part #: TRM118FD / SKU: M100-1067