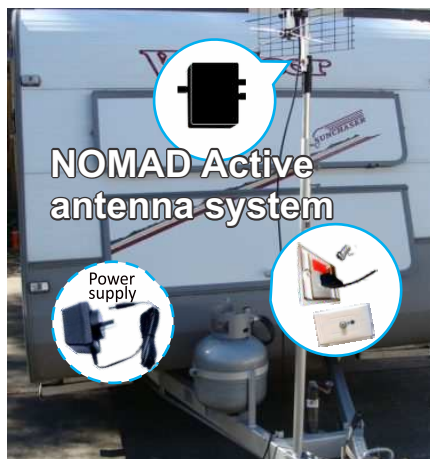


Amplified Antenna complete with Mast and Drawbar Mount

Part No. C4AMK-P



**NOMAD Active
antenna system**

Power
supply

**NOMAD
ANTENNA SYSTEM**

GO ANYWHERE!
RECEIVE PICTURES 98% OF THE TIME

All needed Antenna System Components included:

- 3000W Antenna
- 1M Short Lead
- Full Instructions
- Drawbar Mount Connection System
- 7M of Low Loss Cable Termination (Ready to use)
- 12 volt 900 Pack DC 12 volt Lead
- Technical Support Amplifier

DESIGNED IN AUSTRALIA FOR RECREATION VEHICLE INDUSTRY

Mounting Kit, Drawbar or Side Mount for Simple Setup also available!

MPN	C4AV2-P	WEIGHT	3 kg
SKU	A100-1002		
DIMENSIONS	540mm x 340mm x 12mm Box		

Phone: (03) 9975 7555
13/12 Edina Road,
Ferntree Gully, Vic. 3156
sales@wilkgard.com.au
www.wilkgard.com.au

WILKGARD
TECHNOLOGY GROUP
PROPRIETARY LIMITED

SPECIALISTS IN R.F. TECHNOLOGY
MANUFACTURERS & SUPPLIERS OF THE

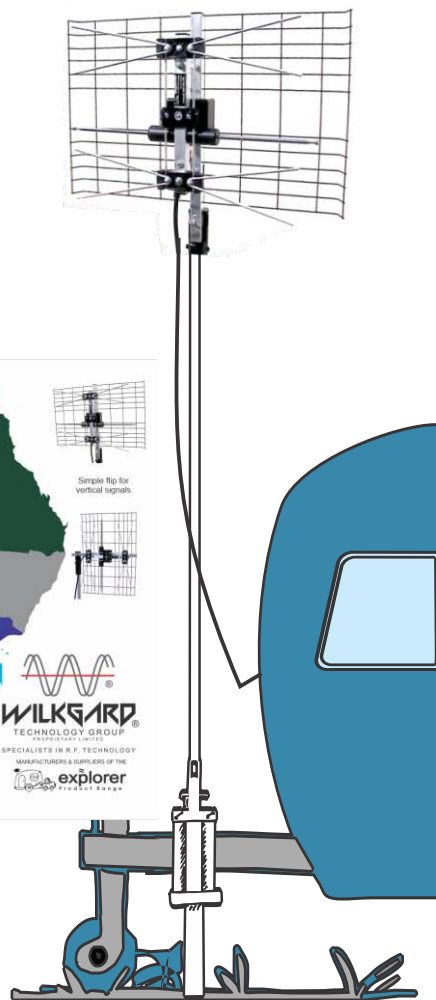
explorer
Product Range



SPECIALISTS IN R.F. TECHNOLOGY
MANUFACTURERS & SUPPLIERS OF THE



- ▶ To enquire telephone : (03) 9975 7555
- ▶ email dissem@wilkgard.com.au ▶ www.ewilkgard.com.au
- ▶ 13/12 Edina Road, FERNTREE GULLY, 3156. VIC.



MK-P

Made up of DBM-P and TM45-P

Assembly instructions

Drawbar Mount: DBM-P

Complete Parts List:

1. Backing Plate
2. Front plate
3. 4 x 6mm dia. x 65mm set screws.
4. 2 x Thumb Screws.
5. 4 x 6mm washers.
6. 4 x 6mm nuts.

Choose the correct hole
spacing for your
drawbar size.



SPECIALISTS IN R.F. TECHNOLOGY
MANUFACTURERS & SUPPLIERS OF THE



explorer
"MUCH MORE THAN AN ANTENNA"

Suits from 50mm to 150mm deep Drawbars
and Masts from 20 mm to 38mm diameter.

- ▶ Telephone : (03) 9975 7555
- ▶ qual@wilkgard.com.au
- ▶ www.explorer-rv.com.au
- ▶ 13/12 Edina Road, FERNTREE GULLY, 3156. VIC.



Telescopic Mast: TM45-P

1. First take the 38mm Dia mast pole and lay it on a flat table with the three holes facing up. Fig 1.



Fig 1

2. Using a flat thin object such as a butter knife or a finger nail emery board, etc, as an installation tool, place one of the T-nuts onto the end of the tool, refer to photograph. Fig 2

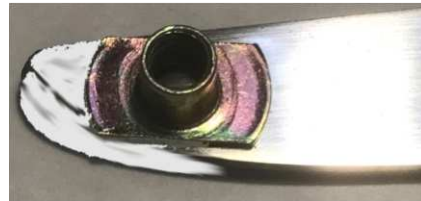


Fig 2

3. Carefully insert the T – Nut into the tube until it lines up with the second rear most hole and raise the t-nut into the hole. Fig 3



Fig 3

4. Hold the T-Nut in place and screw the Thumb screw in a few threads, which will prevent the T-Nut from falling out. Repeat for the top hole. Fig 4

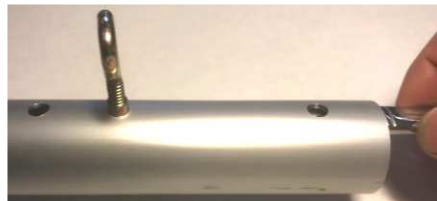


Fig 4

5. Set aside the 38mm dia mast pole and repeat procedure for the 32mm Tube. Fig 5



Fig 5

6. If installing the mast cap on the 25 mm tube, do so now.

7. Then pick up the 32mm mast tube and rotate it so that the T-Nuts and Thumb screws now hang down.

8. Place the bottom of the mast on the ground away from you so that the mast is sloped on an angle.

9. Look down the end of the tube and rotate the two thumb screws so that the T-nuts look like the picture. Fig 6



Fig 6

10. Pull the thumb screws to fully seat the T nuts.

11. While holding the 32mm tube in this position, pickup the 25mm dia tube and insert the end into the 32mm dia tube and slide it down until it is sticking out a small length and tighten the thumb screws to hold in place.

12. Now pickup the 38mm dia tube and repeat steps 6 to 10 to insert the two assembled stages (32mm dia and 25mm dia) into the 38 mm dia tube. And tighten the thumb screw to hold.

Note: If assembling an explorer antenna mount as used of our Nomad, East Coast, optimiser or upgrade antennas then you will need to drill a 5 mm diameter hole in the end to match the mount. Refer to the Antenna instructions section on installing antenna to mast.

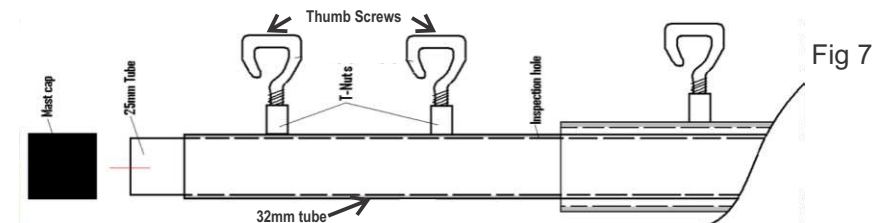


Fig 7